

# SOUTHWATER PARISH COUNCIL

---

## TREE MANAGEMENT POLICY



Reviewed: January 2025  
Approved: August 2018  
Review Period: 3 years  
Next Review Date: March 2028

# INDEX

## Contents

1. Introduction .....	2
2. Policy Scope .....	2
3. Legislation.....	2
4. Inspection of Trees.....	3
5. Tree Maintenance .....	4
6. Publicising Tree Felling/Pruning .....	6
7. Dealing with Tree Care.....	6
8. Damage and Tree Roots .....	11
9. Protected Trees.....	13
10. Other Factors Constraining Work to Trees.....	13
11. Vandalism and Damage to Council Owned/Managed Trees .....	14
12. Biosecurity/Pest & Epidemic Management.....	14
13. Tree Pruning Techniques.....	15
14. Tree Planting Strategy .....	17
15. Commonly Asked Questions.....	18

## 1. Introduction

- 1.1. Southwater Parish Council has produced a Tree Management Policy which is relevant in order to maintain a consistent approach to tree management in the parish of Southwater.
- 1.2. Trees make an enormous contribution to the character and beauty of our landscape and create/maintain environments rich in biodiversity. Southwater Parish Council values its trees and recognises both the human and environmental benefits of having a healthy and sustainable tree population.
- 1.3. The council also recognises that although trees are a positive feature, they can be the cause of a range of problems, from being a nuisance or inconvenience to potentially causing serious injury or even death. As a tree owner we have a direct responsibility for ensuring our trees do not pose a danger to the public or property and are managed appropriately. This policy sets out our approach to tree management.
- 1.4. We aim to inspect our tree stock at an appropriate frequency, depending upon number of pedestrians, vehicles and other targets either passing beneath or within falling distance of the tree, to ensure continued public safety. Following inspection, the trees will be assigned a risk classification which will inform their prioritisation for maintenance works.

## 2. Policy Scope

- 2.1. This policy applies to all trees under Southwater Parish Council ownership / management, which are located within the parish boundary.
- 2.2. Although, we believe this policy to be as comprehensive as possible, we acknowledge it does not cover every situation. We reserve the right to exercise discretion in application of this policy when to do so would be in the best interests of the Council and its residents.

## 3. Legislation

- 3.1. There is a range of legislation which has been considered during the development of this policy, for example:
- 3.2. The Parish Council recognizes that Tree Preservation Orders (TPOs), in respect of trees or woodland, which is considered to have a significant impact on the amenity of a local area.

- 3.3 In addition to those trees protected by a Tree Preservation Order, the Parish & Country Planning Act (1990) also makes special provision for trees in conservation areas.
- 3.4 The Hedgerow Regulations (1997) introduced powers allowing important rural native hedgerows to be protected.

## 4. Inspection of Trees

- 4.1 We work to a risk-based approach to tree management: a programme of inspection identifying and prioritising potential hazards. The cycle of inspection for trees will be set as every 2 years.
- 4.2 Impromptu Inspections:
- a) The following do not form part of a programmed tree inspection schedule and therefore are dealt with on an ad hoc basis:
    - Woodland trees which are not adjacent to a formal path, property, fence line, or the highway.
    - Those trees located within areas of infrequent public access.
    - Inspections required outside of those previously programmed.
- 4.3 Individual Risk Assessments
- a) In addition to the zoning of trees, part of any programmed or ad hoc inspection includes an assessment of the risk posed by each individual tree. However, unless a finding requiring a remedial task is identified such assessments are not generally recorded, i.e., negative reporting.
- 4.4 Inspection Criteria
- a) A routine visual tree assessment (VTA) could include a ground level assessment of the following components:
    - Root and stem assessment
    - Reactive growth
    - Growth defects
    - Appearance/condition of the bark
    - Foliage (if present)
    - Pest and disease
    - Fungal fruiting bodies
    - Local environment of the tree
    - Potential to cause damage to property via both the direct and indirect influence of the tree.

## 5. Tree Maintenance

5.1 Tree maintenance work will be conducted as a result of information gathered during pro-active tree inspections. However, reactionary tree maintenance will always form a key element of overall tree maintenance operations and normally originates from the following:

- Programmed and routine inspections by a qualified tree inspector/consultant.
- ad-hoc inspections by Southwater Parish Council staff following enquiries, reports and service requests;
- reports from residents;
- enquires from County and District Councilors;
- reports from utility companies;
- cyclic maintenance;
- Emergency works (e.g. resulting from high winds).

5.2 A tree could warrant immediate attention if, for example:

- it has snapped or blown over;
- it is rocking (roots are damaged);
- it is uprooted but held up by another tree or building;
- a large branch has broken off or is hanging off the tree;
- it or its branch is blocking the road or footpath;
- it or its branch is blocking access to property;
- it has fallen on to a structure, such as a building or car;
- it is dead

5.3 A tree may be a risk to people or property but does not require immediate attention if: for example

- it is dying (few leaves in summer or dieback in the crown);
- its bark is loose and falling off;
- mushrooms or fungi are growing on or near the tree;
- old splits and cracks are in the trunk or large branches;
- Smaller branches or twigs are falling from the tree.

5.4 Trees will be made safe via pruning or felling and we would use the most cost effective approach. However, for certain High Value trees we would consider other options to reduce the risk to an acceptable level. This would include options to reduce the likelihood of the tree failing or the likelihood of persons being close to the tree if it did fail.

- 5.5 Woodland Management
- a) Southwater Parish Council own and manage numerous small woodlands within the Parish, these are predominantly broadleaved, usually small in size and often a natural amenity people enjoy close to their homes.
- 5.6 Management Aim
- a) To continue to manage woodlands in a way that provides opportunities for nature conservation, areas of high bio-diversity, extends access where appropriate and develops opportunities for recreational enjoyment.
- 5.7 Procedure
- a) The Council will ensure that all woodlands on public land are managed appropriately in accordance with accepted practices and with respect for their value as important landscape features, wildlife habitats and recreational amenities.
- 5.8 Public Access
- a) Good access is important to allow people to enjoy Council owned woodlands within the Parish. Defined paths not only improve public safety by the provision of level footpaths where possible, some steps and where appropriate bridges, but deter people from wandering into potentially sensitive areas.
- 5.9 Management Aim
- a) Provide and maintain footpaths.
- 5.10 Procedure
- a) The Council will carry out essential public safety work and endeavour to create/provide adequate access routes, such as recognisable paths, access points and interpretation signs appropriate to the site.
- 5.11 Nature Conservation
- a) The creation and maintenance of woodland ecosystems should be carried out with caution, as diversification nearly always requires clearance of woody growth, which in itself has a wildlife habitat value. Changes to existing habitats should only be made if the creation of a new habitat is likely to be of a higher value or significantly improves the amenity value.
  - b) Several Council owned woodlands have within them habitats of important nature conservation, some of which have been formally designated as Sites of Special Scientific Interest (SSSI) or Sites of Nature Conservation Interest (SNCI). These areas provide valuable habitats for flora and fauna, some of which are Red Data Book Species (a list of rare or threatened species). Such species and their associated habitats are afforded special protection by English Nature, whom require consultation and in some instances the issue of licences before carrying out operations likely to affect them.

- 5.12 Management Aim
- a) To maintain and enhance woodland ecosystems and sites of nature conservation and create management plans
- 5.13 Procedure
- a) The Council will ensure where possible site surveys are completed prior to any major work commencing to ensure valuable habitats are not lost as a result. Where appropriate, the Council aims to leave habitat piles created from suitable logs to form valuable environments for invertebrates and fungi. All works will be carried out in full accordance with the Wildlife and Countryside Act 1981.

## 6. Publicising Tree Felling/Pruning

- 6.1 Where works are minor such as pruning (including repeat cyclical pruning of trees) or involve removing trees that are less than 15 cm diameter (6 inches) at a height of 1.3 metres, we will not publicise the works.
- 6.2 Where works are more impacting, for example, felling larger trees, carrying out works to a veteran tree or a tree with a Tree Protection Order (TPO), we will erect an informative site notice on or very close to the affected tree. If more than one tree at the same location are affected it may be more appropriate to erect a site notice including a map / schedule. We will also tell 10 houses opposite and either side by letter (if applicable).
- 6.3 If a tree scheme (felling, pruning or planting) is judged to be more impacting on the local area we will consider more publicity as appropriate.
- 6.4 Where a competent officer has determined that the tree should be felled on public safety grounds there will be no public consultation and no right of objection.

## 7. Dealing with Tree Care

- 7.1 It is important that individual issues are dealt with consistently and that decisions are balanced against the positive contribution that trees make to the environment and enjoyment of the Parish by local residents and visitors. Many of the complaints received involve minor or seasonal issues that are generally considered to be foreseeable or social problems associated with living near trees, which can often be minimised through careful pruning and careful species selection when planting.
- 7.2 In all cases, consideration will be given as to whether the tree in question meets the necessary criteria for protection.

7.3 To ensure that requests for works to trees are dealt with efficiently, consistently and fairly, our policy in relation to the more common types of request is outlined below.

#### 7.4 Obstructing/Overhanging Tree Branches

- a) Tree branches can cause obstructions to public footpaths, roadways / signs, streetlights and open spaces. Appropriate pruning to eliminate hazards caused by obstructive branches will normally be acceptable, providing efforts are made to retain the shape of the tree.
- b) We will not prune trees that overhang neighbouring properties unless the trees are dangerous or causing an actionable nuisance (i.e. touching the walls, roofs, windows, gutters, garage etc.). This will ensure that damage to property such as aerials, tiles or gutters is avoided.
- c) Adjacent Landowners do have a common law right to prune back tree branches to their boundary, providing that this would not lead to tree death and providing that the tree in question is not protected by a Tree Preservation Order (TPO) or situated within a Conservation Area.

#### 7.5 Boundary Encroachment

- a) Trees may encroach adjoining property boundaries in two ways, via their branches or their roots. There is no requirement in law to prevent this encroachment. However, whilst there is no obligation on the Council's part to prune its trees in these circumstances, the owner of the adjoining property is permitted to remove this encroachment in accordance with their entitlement under common law.
- b) It is the responsibility of the landowner, not the Council, to ensure that a tree is not protected by planning legislation such as a Tree Preservation Order, growing within a designated Conservation Area, or subject to a Planning condition before carrying out or authorizing works.

#### 7.6 Management Aim

- a) In order to reduce unnecessary site visits the Council will provide information outlining its responsibilities in relation to encroachment. This will include the resident's entitlement under common law to rectify the issue themselves. If requested, a site visit can be arranged.

#### 7.7 Procedure

- a) The Council will assess each request on its merits and only carry out work where the extent of that encroachment is considered significant in relation to the size and position of the trees, or where it has been demonstrated the encroachment is causing an 'actionable nuisance'. Shading, bird roosting, honeydew exudations and seasonal leaf fall are not considered 'actionable'.



## 7.8 Shading and Loss of Light

- a) A common complaint from members of the public regarding Council owned trees is the shading of their properties or gardens. Trees will not usually be pruned or removed in response to complaints of reduced light to properties. Often the reduction of a tree allegedly shading an area is very often a short term fix, frequently detrimental to tree health and safety and creating a need for an ongoing financial and management commitment.
- b) In relation to trees there is no right to light or a view in law.

## 7.9 Management Aim

- a) The Council will provide information when requested outlining its responsibilities in relation to shading. This will include the resident's entitlement under common law to rectify the issue themselves. If requested, a site visit can be arranged.

## 7.10 Procedure

- a) Pruning trees to improve light levels will only be carried out in the most exceptional circumstances.
- b) Trees are often perceived to block light to nearby properties. However, pruning or removal of trees will often have a negligible impact on the amount of light reaching a house or garden. Therefore, tree works to improve light levels will not normally be considered. However, we will consider taking action (pruning or felling) in the following circumstances:
  - if the height of the tree is more than 12metres and the distance between the base of the tree and the window of the nearest habitable room is less than 5metres;
  - if the height of the tree is less than 12metres and the distance between the base of the tree and the window of the nearest habitable room is less than half the height of the tree (where the separation between the edge of the tree canopy and a vertical line through that window is less than 2metres).
- c) A 'habitable room' is a dining room, lounge, kitchen, study or bedroom but not a WC, bathrooms, utility room, landing or hallway.

## 7.11 Loss of View

- a) Trees will only be pruned or removed to restore views when necessary to retain important public viewpoints or there is potential to bring about significant public benefit and/or enhance the local landscape or parishscape. Historical records may be used to determine the level of management

required. Pruning of trees for highway sight-line requirements will be dealt with on a case by case basis.

#### 7.12 Trees Affecting Reception (Television/Satellite/Solar Panels)

- a) The TV licence is a permit to operate a television receiver, it does not guarantee reception and it therefore follows that there is no legal right to a signal. There is no case law in respect of trees interfering with TV reception. Therefore, trees allegedly affecting TV reception are unlikely to be regarded as an 'actionable nuisance'.

#### 7.13 Management Aim

- a) The Council will not carry out pruning to improve TV or satellite reception to trees that otherwise do not require work.

#### 7.14 Procedure

- a) The Council will, as far as reasonably practical, offer advice to members of the public of alternative means of improving TV and satellite reception.
- b) Pruning in the short term may help improve television reception. However, in the long term the flush of quick, extra growth associated with pruning can exacerbate the problem. In most cases the problem can be resolved by relocating the aerial or satellite dish, or alternatively using a booster. Residents are advised to contact their satellite or TV provider for specialist advice. Removal or pruning of trees to enable a clear television reception would only be considered in exceptional circumstances.
- c) Similarly, we will not prune or fell a tree in our ownership / management to improve natural light to a solar panel. Whilst we recognise the need for renewable energy sources, trees are also important in tackling climate change.

#### 7.15 Overhead Cables/Telephone Wires

- a) Utility companies have certain legal rights to carry out works to public or privately owned trees to address health and safety problems and to maintain a clearance between trees and their apparatus to ensure continuity of supply. This may sometimes involve the loss of trees. Where works to trees are necessary as a result of proximity or conflict, we will encourage utility operators to adopt the most appropriate long term solution, giving consideration to tree health, local tree cover and visual amenity.
- b) Problems caused by branches interfering with privately owned telephone wires can usually be eliminated through appropriate pruning and tree removal would not usually be considered.

- c) We will not prune or fell a tree in our ownership / management to prevent or reduce interference with telephone wires. We would recommend contacting the telephone service provider in such circumstances.

#### 7.16 General /Minor Nuisances

- a) We will not fell or prune trees solely to alleviate problems caused by natural and/or seasonal phenomena, which are largely outside of our control. There are a variety of potential nuisances associated with trees, most of which are minor or seasonal and considered to be normal and acceptable consequences of living near trees. Examples of such problems are:

- Falling leaves, sap, blossom, fruit, nuts, bird and insect droppings;
- Insects associated with trees (spiders, wasps, flies etc.);
- Reduction or increase of moisture to gardens;
- Suckers or germinating seedlings in gardens;
- Leaves falling into gutters, drains or onto flat roofs;
- The build-up of algae on fences, paths or other structures.

- b) Clearing of leaves from gutters and pathways and weeding of set seeds are considered to be normal routine seasonal maintenance which property owners are expected to carry out.

- c) Falling leaves, sap, blossom, fruit, nuts, bird and insect droppings are not readily controllable by pruning and cleaning of affected surfaces can be considered to be routine maintenance. Pruning will not normally be considered solely as a way of alleviating problems with these issues alone.

- d) We would not normally prune or fell a tree under our ownership/ management that bears poisonous fruit / foliage (such as laburnum or yew).

- e) However, where it is known that unsupervised young children are likely to be exposed to berries or foliage that will make them ill if eaten, we will investigate and take action, where appropriate.

#### 7.17 Trees considered too big/too tall

- a) We will not prune or fell a tree under council ownership / management because it is considered to be 'too big' or 'too tall' for its surroundings.

#### 7.18 Personal Medical Complaint

- a) We will normally not prune or fell a tree under our ownership/management where a request has been made to do so because of a personal medical complaint. However, where it can be established that the presence of a tree is

causing a detriment to the health of resident's further consideration will be given to the management approach of trees.

## 8. Damage and Tree Roots

- 8.1 Many tree conflicts arise because of the presence of tree roots and the perception that they are causing damage. Where damage is alleged, each complaint will be investigated on an individual basis. The following guidance will be used in assessing levels of nuisance and identifying appropriate action.
- 8.2 Root invasion in gardens. Tree roots in gardens are a natural occurrence and root presence is unlikely to be affected by tree pruning or removal. Landowners do have a common law right to prune back tree roots to their boundary, providing that this would not lead to tree death and providing that the tree in question is not protected by a Tree Preservation Order (TPO) or situated within a Conservation Area.
- 8.3 Most species of deciduous tree will re-sprout from the stump when cut down. Many species will produce a new growth shoot from a root if it becomes exposed to sunlight through ground erosion. Some species readily produce shoots from their buried roots as a way to regenerate and this is often stimulated by stresses, such as heavy pruning or felling. Numerous tree species (including Cherry and Poplar) are therefore likely to produce vigorous root suckers as a response to being felled. Poisoning a stump to prevent such suckering is not always successful since application of herbicide onto a stump face often only affects the stump and the upper roots.
- 8.4 Tree felling or branch pruning in response to root invasion in gardens would not normally be appropriate, as such works are likely to worsen existing problems. The pure encroachment of roots into adjoining land is not considered to amount to actionable nuisance.
- 8.5 Damage to walls and fences
  - a) It is often possible to rebuild or repair garden walls and fences to take account of adjacent trees.
  - b) This can be achieved in a number of ways (for example installing a section of railing or bridging foundations around the base of a tree). Therefore, where trees are considered to be causing damage to walls or fences, we will only consider tree removal if the walls or fence is irreplaceable and of exceptional importance e.g. a retaining wall or of historical interest, or if there is a risk to public health in leaving the tree which cannot otherwise be mitigated. If a damaged wall or fence was constructed after planting of the tree, it may mean that the design or construction has failed to take the presence of nearby trees into account.

## 8.6 Damage to paths

- a) It is often possible to repair paths to take account of adjacent trees and tree roots. Where roots protrude they can be root pruned, or the path re-laid around the tree with flexible materials such as asphalt to provide a smooth surface. Where trees are considered to be causing damage to paths or footpaths, we will not normally consider tree removal except where there is a risk to public health which cannot otherwise be mitigated.

## 8.7 Damage to drains or water pipes

- a) There is no evidence to suggest that the tree roots can actively penetrate an intact pipe or drain, but they can find their way into drains by any existing fault and increase damage. In these situations, the owner of the drain should seek to get the drain repaired at their own expense. Tree removal will not normally be considered.

## 8.8 Subsidence

- a) While we recognise our responsibilities for the trees in our ownership / management, we will expect any claim against our own trees to be supported by sufficient evidence by relevant authority/ industry body to show that the tree in question is a contributory factor in the subsidence. Where this evidence is provided, we will obtain expert specialist advice to verify submitted evidence as necessary. We will therefore require the following information in order to consider a claim associated with tree related subsidence:

- description of type of damage;
- indication of seasonal movement;
- levels and distortion survey;
- visual evidence of damage;
- depth of foundations demonstrated from excavated trial holes;
- analysis of soil type under foundation;
- presence and identification of trees roots.

- b) We will not normally subject our trees to regular heavy pruning to deal with suspected damage. Instead we will where feasible opt for removal and replacement planting with an alternative species that is less likely to cause future problems.

## 8.9 Heave

- a) When a tree is removed in a clay sub-soil, the soil will rehydrate and swell in volume. The expansion may lift the foundations and cause cracking to the property. This is known as 'heave'. This is more likely to occur if the removed

tree was mature and had a high water demand such as an oak tree. No liability of any kind, at present, falls upon a local authority for damage due to heave resulting from tree removal.

## 9. Protected Trees

9.1 It is the responsibility of the landowner, not the Council, to ensure that a tree is not protected by planning legislation such as a Tree Preservation Order, growing within a designated Conservation Area, or subject to a Planning condition before carrying out or authorising works

9.2 Tree Preservation Orders (TPO's)

- a) A TPO is a legal document made, administered and enforced by the local planning authority, to protect specified trees and woodlands with public amenity value.
- b) A TPO prevents cutting down, uprooting, topping, lopping, wilful damage or destruction of trees (including cutting roots) without permission.
- c) The Parish Council recognises its responsibilities in regard to its trees that are protected by TPOs.

9.3 Trees in Conservation Areas

- a) It is an offence to cut down, prune, lop, top, uproot or wilfully damage or destroy a tree in a conservation area without giving prior written notice to Horsham District Council.
- b) The Parish Council recognises its obligations when undertaking works to trees in conservation areas.

## 10. Other Factors Constraining Work to Trees

10.1 Birds

- a) Under the Wildlife & Conservation Act 1981 (as amended) it is an offence to kill, injure or take wild birds, their young, their eggs or nests. Non-urgent major tree work involving tree removal / reduction and hedge cutting operations should not normally be undertaken during bird nesting / breeding season, which is considered to be from 1st March to 31st July.

10.2 Bats

- a) Bats are a European Protected Species and are protected by the Conservation of Habitats and Species Regulations 2010 and the Wildlife & Countryside Act 1981 (as amended). Causing damage to a roosting / nesting site is a criminal offence which can lead to imprisonment. Trees displaying signs of roosting bats will be referred to an Ecologist before any work commences. Any trees supporting roosting bats will not be worked on until Natural England is consulted.

### 10.3 Restrictive Covenants

- a) Occasionally, restrictive covenants attached to the deeds for a property may restrict what work can be undertaken to trees.

## 11. Vandalism and Damage to Council Owned/Managed Trees

- 11.1 Vandalism is an increasing pressure on trees. Usually it is young newly planted trees that are damaged; however, mature trees are often damaged too. There are various ways in which vandalism can be counteracted, but none of these is 100% effective against determined attack.
- 11.2 The main methods of deterring vandals are to plant large numbers of very young trees, known as whips, or to plant larger robust trees depending on the site. Another method is to put guards or fencing around trees, but these have to be large enough and strong enough to offer real protection.
- 11.3 This latter approach tends to be the most expensive method and only appropriate in very high profile positions. In the long run, increasing environmental awareness within schools and communities should help reduce vandalism. There are cases where trees we own / manage have been irrevocably damaged or removed without permission. We will investigate any reports of vandalism / damage to trees in our ownership / management, and try to repair any damage where we can.
- 11.4 Where possible, we will take legal action against the person(s) causing the damage.

## 12. Biosecurity/Pest & Epidemic Management

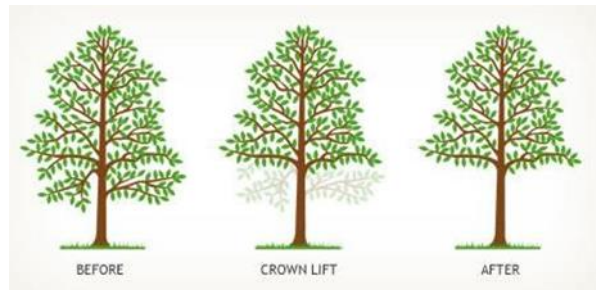
- 12.1 Biosecurity is a set of precautions that aim to prevent the spread of pests, pathogens or invasive species. The threat to trees from these has never been greater and as a large landowner we undertake to follow best practice and specific advice which is regularly published by the Forestry Commission. Attendances to high risk sites are subject to risk assessment and we employ measures to minimise pest or disease spread.

## 13. Tree Pruning Techniques

13.1 We will seek to ensure that tree works are carried out to the highest standards. In carrying out tree works, we and any third party working on trees over we have a responsibility, will ensure that pruning conserves the overall amenity value, form and shape of the tree and all tree works must be carried out in accordance with British Standard 3998 – Recommendations for Tree Work. Particular pruning specifications may or may not be appropriate for trees of different ages, species, health and condition, or even between trees of the same species depending on their condition, age and environment. Clear and acceptable pruning objectives are necessary in advance of approval of a pruning specification. The pruning objectives may require implementation of one or more of the following operations:

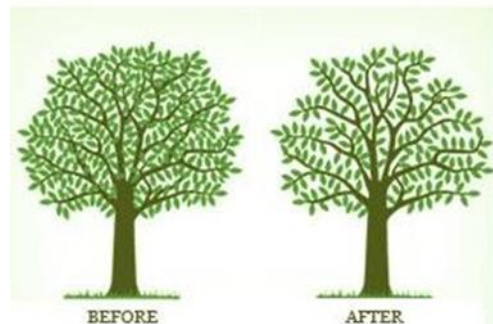
### 13.2 Crown Lifting

- a) The removal of the lowest branches of a tree so that the remaining lowest branches are at a specified height, usually 2.4m over a footpath and 5m over a road. This operation is undertaken for a number of reasons, such as to allow access under a tree; to clear branches from low structures; or to allow light under the canopy.



### 13.3 Crown Thinning

- a) The removal of a specified proportion of branch material from the interior of the crown without affecting the shape of the tree. This operation is usually undertaken to reduce crown density; form a healthy branch structure by removing dead; diseased, damaged, crossing and rubbing branches, and allow more light through the canopy. Many tree species evolve a canopy density for adaptive reasons and crown-thinning can increase turbulence and cause drought stress and branch failures. For this reason, crown thinning is usually only acceptable when carried out as part of crown cleaning or balancing



### 13.4 Crown Reduction



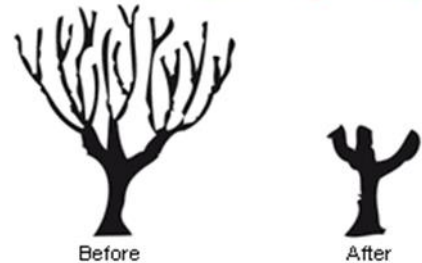
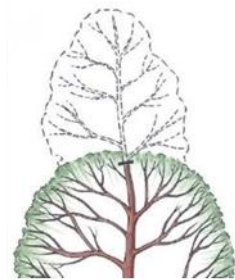
- a) Reducing the overall size of the crown area by a specified percentage by pruning back the leaders and branch terminals to lateral branches that are large enough to assume the terminal roles (at least



one third the diameter of the cut stem). Crown reduction up to a maximum of 15-20% may be acceptable to semi-mature trees providing cuts do not exceed 5-7cm and where shaping and restricting size and spread is essential. Crown reduction of mature or older trees is not normally acceptable as it can severely affect tree health and may lead to the death or decline of the tree and is generally only acceptable as management of last resort.

### 13.5 Topping

- a) This entails cutting at a certain height to reduce the height of the tree. Topping is not acceptable as it severely affects the public amenity and health of the tree, sometimes leading to death. Topping can also lead to future problems due to a flush of weak re-growth that can represent a danger and also exacerbate existing problems. If height reduction is considered essential and unavoidable, crown reduction (see above) is preferred.



### 13.6 Pollarding

- a) This severe operation entails the removal of the entire tree's branch structure back to the trunk. Pollarding is an ancient way of maintaining trees that is sometimes necessary, particularly on trees that have been pollarded previously. Only certain species will tolerate this degree of pruning, and new growth may be weak and prone to tearing off. This method of management is not therefore normally acceptable

### 13.7 Dead Wooding or Crown Clean

- a) This operation is similar to a crown thin except that only dead, diseased, crossing and rubbing branches are removed to tidy up the appearance of the tree. No healthy, sound wood is removed. This operation is recommended to help maintain a healthy, safe tree.

### 13.8 Formative Pruning

- a) The removal of problematic or potentially problematic branches, ensuring good tree development.

### 13.9 Stump Grinding

- a) Stump grinding is the practice of removing a tree stump to below ground level by mechanical means. We will carry out stump grinding where necessary to enable new trees to be planted or to remove a significant hazard. Where stump removal is not necessary tree stumps will be removed close to ground level so as not to leave a trip hazard.

### 13.10 New Tree Planting

- a) Where it has been established that the removal of a tree is the appropriate course of action, careful consideration must then be given to replacement planting.

### 13.11 Management Aim

- a) To ensure that the size, species and scale of the replacement planting reflects the tree removed and the limitations of the planting site or management plan already in place.

### 13.12 Procedure

- a) The Council, where considered appropriate and within budgetary constraints, will replace felled trees on a minimum of a one-for-one basis.

## 14. Tree Planting Strategy

### 14.1 Alignment with Policy SNP18

The Southwater Neighbourhood Plan Policy SNP18 emphasises maintaining and enhancing a treed landscape to preserve Southwater's unique character. This policy guides Southwater Parish Council to:

- Prioritise tree planting initiatives that align with SNP18 goals.
- Utilise available funds, which may come secured via a Section 106 agreement to enhance or restore treed landscapes within the parish.

### 14.2 Natural Regeneration as a Priority

Following advice from the Forestry Commission, Southwater Parish Council will:

- Focus on natural regeneration in areas affected by tree felling due to disease, as highlighted in independent tree surveys.
- Recognise that natural regeneration typically incurs minimal costs, requiring reduced funding compared to traditional planting schemes.

### 14.3 Funding Opportunities

The Council will actively seek funding grants from reputable organisations, including but not limited to:

- Forestry Commission
- Local and national environmental charities
- Community grants where applicable

### 14.4 Budgeting for Tree Management

When substantial tree planting is required, the Council will:

- Incorporate these projects into the annual budget planning process and obtain funds required via the precept accordingly.
- Consider building an Earmarked Reserve for the specific tree planting project ahead of time to spread the cost over multiple budget years (if appropriate to do so – RFO to advise the Council accordingly).

### 14.5 Native Species and Professional Advice

The Council is committed to:

- Planting native species that support local biodiversity.
- Seeking professional arboricultural advice for selecting species, ensuring long-term resilience to climate and environmental changes.

## 15. Commonly Asked Questions

*To whom does this Policy apply?*

It applies to trees on land owned and managed by Southwater Parish Council.

*The tree is dangerous.*

There are occasions when aside from their own concerns a tree owner has received advice that a tree is dangerous, either from a gardener or a well-meaning friend. This is something that must be defined; e.g., just because a branch fell off in exceptionally high winds does not mean that the tree is dangerous, but the owner would be well advised to have the tree independently checked.

*The tree is leaning.*

A leaning tree is not dangerous just because it leans. Trees grow adaptively to site

conditions and develop additional structural strength where needed. All one can say is that as and when it declines naturally one knows the direction of fall, but trees rarely reach that stage without visible symptoms.

*The tree along the road failed or was given permission for removal.*

Each tree (even in an even-aged avenue) is different and the circumstances that led to the failure or removal of a similar tree cannot be assumed to apply to another.

*The shade is intolerable.*

To what extent and when does the shade occur? One should expect shade from trees, and for the most part some shade is desirable or at least tolerable.

*The tree is too tall.*

Trees do not grow to be too tall for their own good. It may well have outgrown its position in terms of the site circumstances or the spatial relationship between the tree and the site features have changed, in which case it should be independently assessed. However, there are some tree cultivars which have structural shortcomings, but if there is any serious doubt the tree should be independently assessed.

*The tree's pollen/insects/dust/smell is a health hazard.*

This claim should be accompanied by a doctor's personally specific opinion – often a generic statement such as “this can lead to problems” is simply not evidence. Even if demonstrated, the action required may not be appropriate, and the Council may take independent advice.

*Too many leaves/fruit/cones are causing unreasonable effort/expense/trip hazard/blocked guttering and/or drains.*

This is a very subjective matter and there should be a recognition that living with trees can cause compromises, but these have to be weighed with the benefits of trees for the current and future generations.