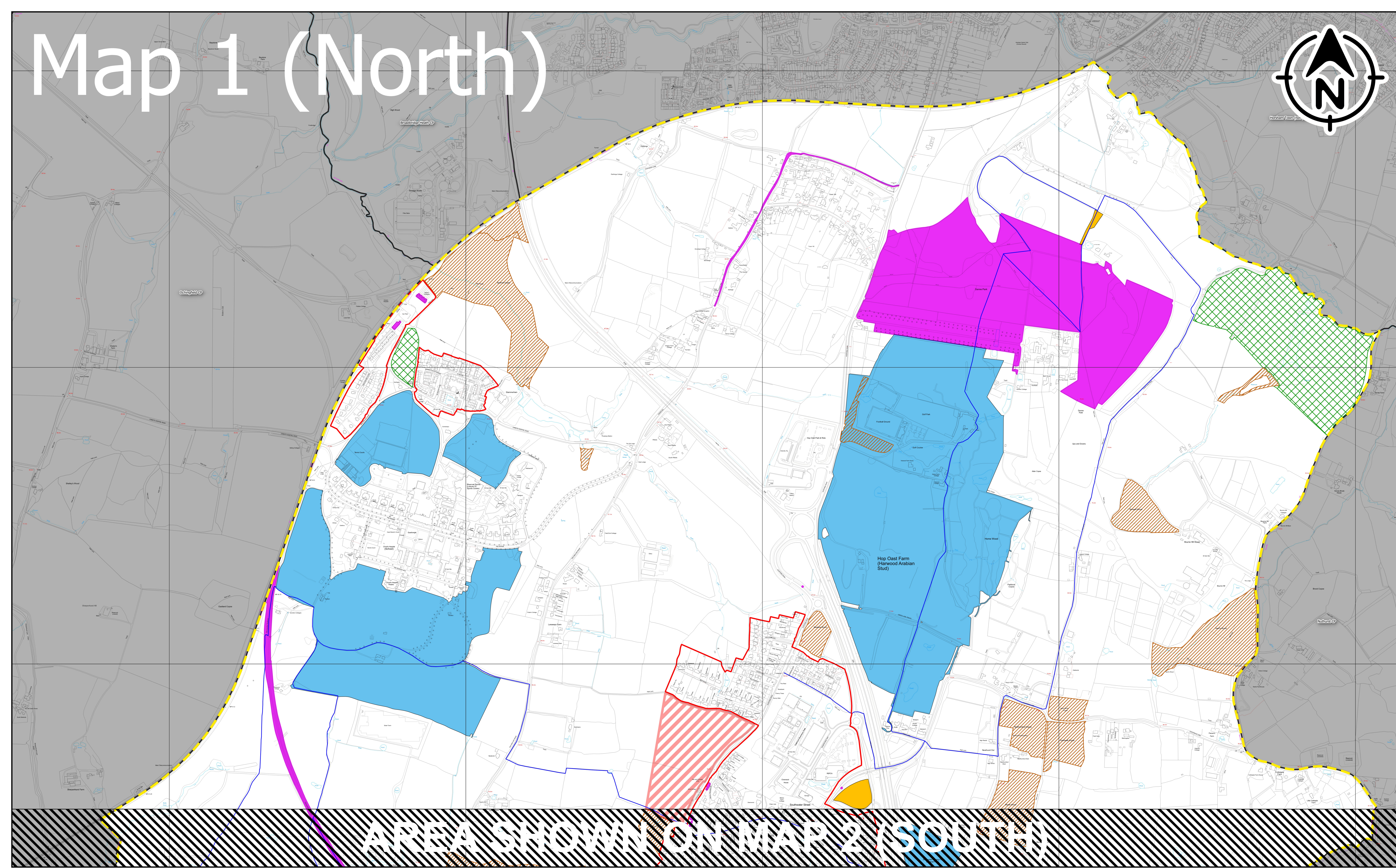
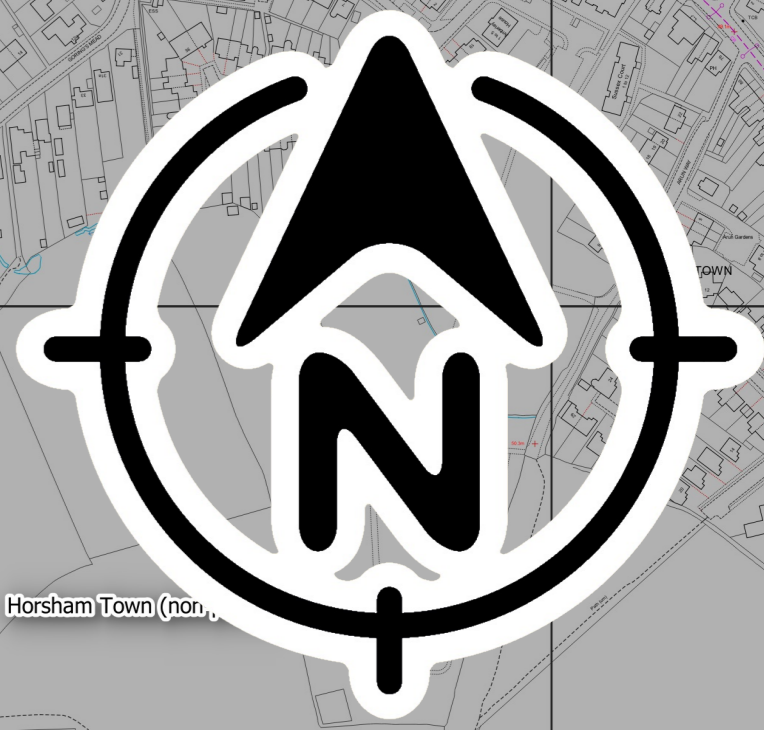


Map 1 (North)



AREA SHOWN ON MAP 2 (SOUTH)

Geo-Political Boundaries

- Plan Boundary
- Parish Boundaries
- Area outside of plan area

Neighbourhood Plan Policies

- SNP1 - Built Up Area Boundary
- SNP2 - Allocation for residential development
- SNP3 - Safeguarded land for secondary school
- SNP5 - Local Green Space

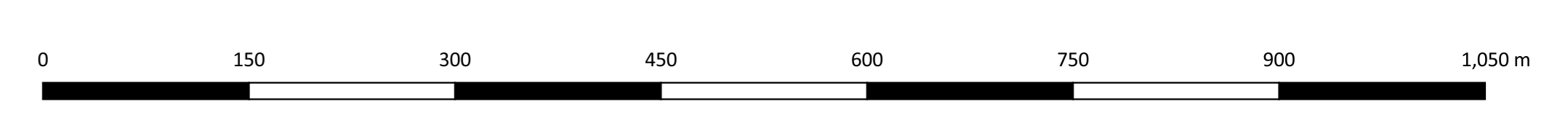
Horsham District Planning Framework Policies

- SNP6 - Local Community Space
- SNP7 - Formal/Informal Sports Areas
- SNP8 - Southwater Country Park
- SNP13 - Promoted Route
- SNP18 - Ancient Woodland

Southwater Neighbourhood Plan Policies

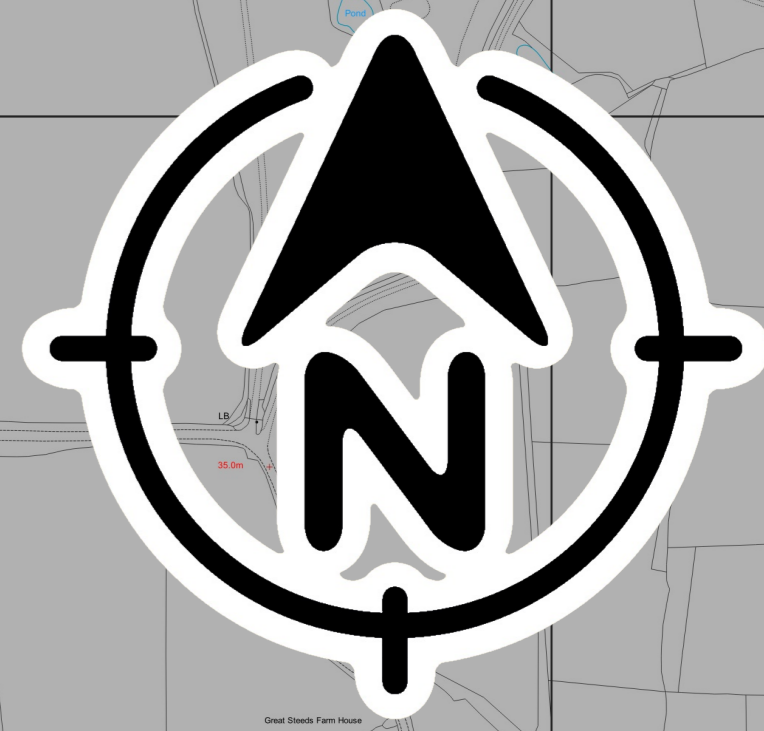
- SNP19 - Parish Heritage Assets
- SNP21 - Parish Employment Area
- SD10: Southwater Strategic site

Southwater Neighbourhood Plan Policies Map 1 (North)



Map prepared by Squires Planning for Southwater Parish Council. © Crown copyright and database rights 2019 OS 0100052740. Contains public sector information licensed under the Open Government Licence v3.0.

Map 2 (South)



Geo-Political Boundaries

- Plan Boundary
- Parish Boundaries
- Area outside of plan area

Neighbourhood Plan Policies

- SNP1 - Built Up Area Boundary
- SNP2 - Allocation for residential development
- SNP3 - Safeguarded land for secondary school
- SNP5 - Local Green Space

Neighbourhood Plan Policies

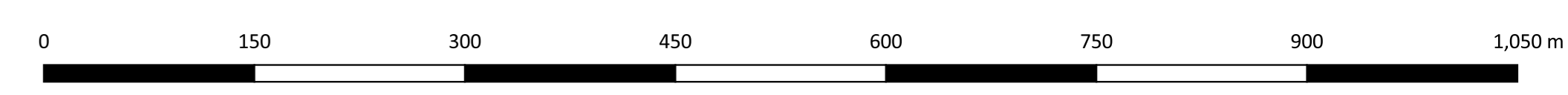
- SNP6 - Local Community Space
- SNP7 - Formal/Informal Sports Areas
- SNP8 - Southwater Country Park
- SNP13 - Promoted Route
- SNP18 - Ancient Woodland

Neighbourhood Plan Policies

- SNP19 - Parish Heritage Assets
- SNP21 - Parish Employment Area
- SD10: Southwater Strategic site

Horsham District Planning Framework Policies

Southwater Neighbourhood Plan Policies Map 2 (South)



Map prepared by Squires Planning for Southwater Parish Council. © Crown copyright and database rights 2019 OS 0100052740. Contains public sector information licensed under the Open Government Licence v3.0.